

# CARLSON SURVCE



# CARLSON SURVCE – POWERFUL FEATURES TO HELP YOU DO MORE IN LESS TIME

## Easy to use

- Tab-Based MENU Structure. All commands are visible in each menu, preventing the need for Up-Down Arrow Keying to view options.

## Enhanced graphics

- Collect points in the graphics mode. Points plot as they are shot in the field or entered. There is no need to switch between screens to view your points.

## Read in LandXML

- Supports LandXML points, DTM, graphics, alignments, profiles and sections.

## New Features

### Modern Look

- SurvCE is colorful with icons standardized to create continuity throughout the product and modernize the user experience.

### Hot List

- The new Hot List lets users jump to the SurvCE routines that previously had shortcuts without having to memorize key strokes. It also provides shortcut functionality to devices without keyboards.

### Volumes

- SurvCE can compute volumes between two surfaces, one surface and an elevation or simple stockpile volumes. Surfaces can be defined by graphical entities and points or by Carlson TIN files.

### Help

- The software has optional on-board help files. These files are the entire user manual and can be installed separately. Click on the SurvCE icon and select Help to get the help document that pertains to the current routine.

### Leveling

- SurvCE can be used to collect trigonometric level loops and digital level loops. Loops can be processed and adjusted on the device and all existing project coordinate points can be updated.

### GPS Networks

- SurvCE supports several GPS network protocols, such as NTRIP, TCP and UDP.

## Localization

- The software supports an unlimited number of localization points. All project scale settings and coordinate system options have been centrally located in the localization dialog.

### Angle Sets in Store Points

- SurvCE allows users to "Configure" how each reading is measured with regard to direct and reverse options (Formerly Known as SS/Trav). If direct and reverse readings are taken at the backsight, then any direct and reverse foresight will be considered an angle set and will be reduced accordingly. This eliminates the need to use a separate routine for angle sets.

### Job Settings

- SurvCE has the option to use a template DXF file for new jobs so that all layers and colors are automatically created per your company standard.
- It has the option to auto-load cutsheets and control files from the previous job for those users that work on one site continuously

- SurvCE has the ability to turn off the auto-descriptions in stakeout and completely customize how all stakeout routines behave

- Point Number by Interval – SurvCE can interval the point ID by using the "Add to Next Pt ID" option. To number all points on the odd numbers, start at 1 and use 2 in this field.

### Feature Coding

- SurvCE can collect parallel lines using the offset horizontal and offset vertical line drawing commands and close a rectangle by three points using the rectangle command. In the settings section of Special Codes, the user can even auto compute and store the additional points at the line vertices that were created by the software.

- SurvCE allows the user to code in numerous coding styles that may be defined by their office package.

## Instrument Switching

- SurvCE keeps track of every instrument completely separate. This includes all base stations, rovers and total stations, so that mixing equipment is easy. Simply configure your gear once and forget it. The instrument icon has been enhanced to allow you to switch between your current equipment.

### Station Equations

- SurvCE supports station equations.

### Reference Alignments

- SurvCE supports associating a reference alignment for station reporting. This allows the user stake a 3' offset to a curb line that is not parallel to the CL of the road, stop at all critical curb stake locations and have the station be reported based on the CL alignment.

### Skew Angle Staking

- SurvCE supports staking offsets on a skew angle and provides the option to stake offset intersections and bisectors at angle points and the radius or PI point of an arc without leaving the Stake Line/Arc routine.

### SurvCE Has More:

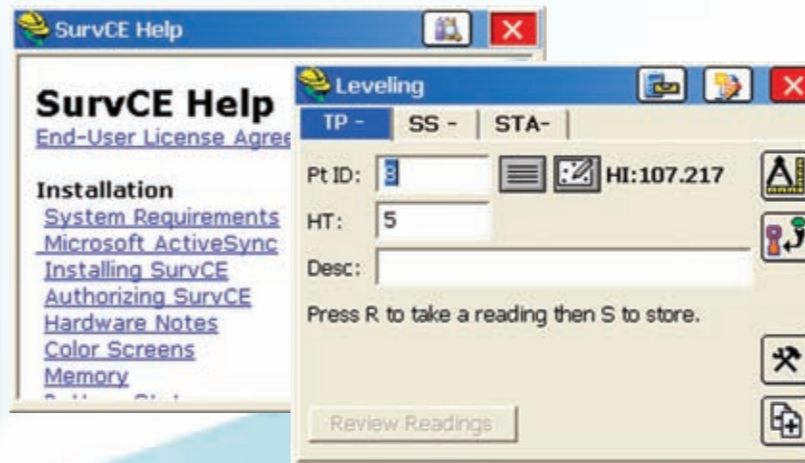
- Supported Instruments
- Supported File Formats
- Supported Handheld Devices

## Languages

In addition to English, SurvCE is available in 15 additional languages, rated following:

- Language translations prepared and endorsed by Carlson Software: Spanish, Portuguese
- Additional substantially complete language translations, actively updated: French, Hungarian, Simplified Chinese, Korean, Swedish, Turkish
- Additional partial or non-updated language translations available: Czech, Dutch, Finnish, German, Greek, Italian, Polish

Help – Click to get the help document for the current routine.



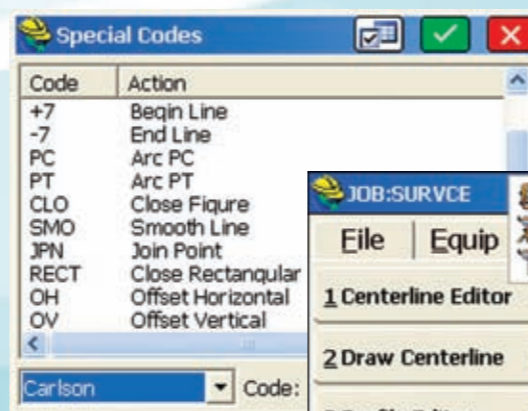
Leveling – Collect and process trigonometric & digital level loops.

Point Number by Interval – Advanced point ID controls.



Job Settings – Customize layers, colors, cutsheets, descriptions and much more.

Feature Coding – Add numerous coding styles & functions.



Instrument Switching – SurvCE keeps track of every instrument, so switching equipment is fast and easy.



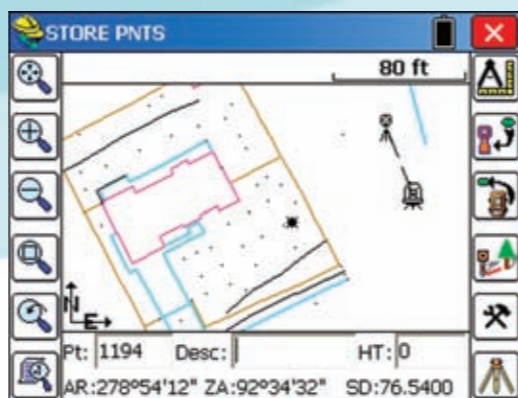
Tab-Based MENU Structure – All commands are visible in each menu.

"I know of no other field and office software combination that works together as seamlessly as Carlson SurvCE.... The ability to transfer coordinate files and alignment files back and forth with no conversion is a big time saver."

— Kevin P. O'Connor, L.S.,  
Urban Engineering & Associates, Inc.

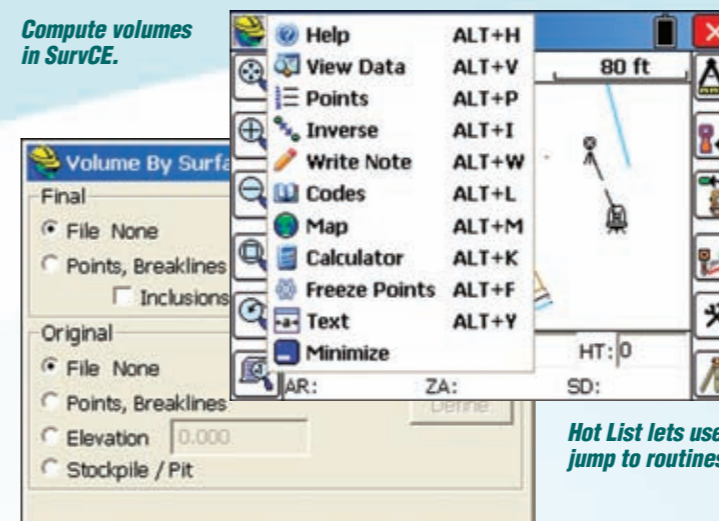


Carlson SurvCE supports all major manufacturers' conventional and robotic total stations and RTK GPS systems.



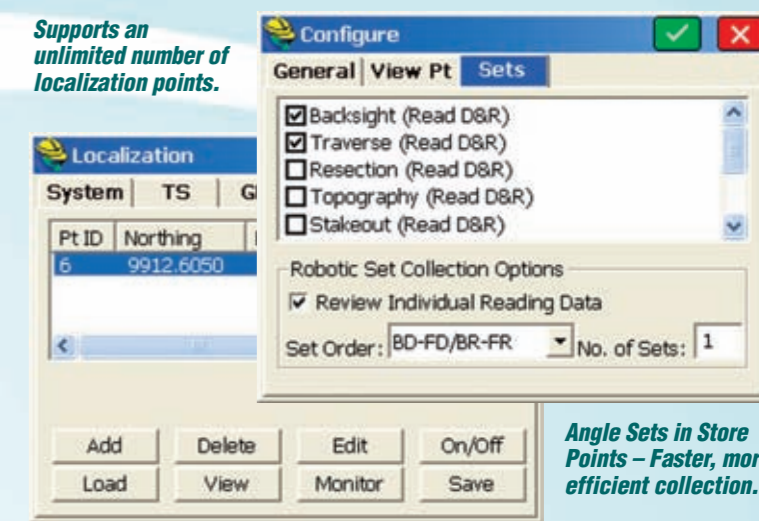
Collect points in the graphics mode.

Compute volumes in SurvCE.



Hot List lets users jump to routines.

Supports an unlimited number of localization points.



Angle Sets in Store Points – Faster, more efficient collection.

## Carlson Software

Carlson Software develops software solutions that bring the land development professional from concept to completion – the full cycle of a project.

An independent company founded by Bruce Carlson in 1983, Carlson Software is well known for its comprehensive civil engineering, land surveying, machine control and positioning, and mining software solutions. Its dedication to customer service is unique in the industry.

### Get FREE Technical Support

Get support from Carlson via phone, email, discussion groups and webcasts. There is no product retirement. Carlson Software supports all versions of all its products. Email [support@carlsonsw.com](mailto:support@carlsonsw.com).

### Sign Up For World-Class Training

Software is an investment and you can learn how to best put it to work for you at Carlson College. Attendees get personal one-on-one attention – its dedication to customer service is unique in the industry. Email [training@carlsonsw.com](mailto:training@carlsonsw.com).

For sales information or to locate a reseller please call:

**800-989-5028**

## Companion Products

For surveying, engineering, mining, or construction, Carlson Software is the one place to find the complete software solution for the entire lifecycle of your projects.

### Carlson Civil

Get the most robust automation and ease-of-use of any civil design solution available today. A wide selection of “power” tools enable users to increase productivity while they create better road, site, and/or subdivision designs in less time. Works with AutoCAD® or IntelliCAD®.



### Carlson Survey

An incredibly productive and intuitive survey solution with all versions complete with SurvNET Network Least Squares and drivers to connect to essentially every manufacturer's proprietary hardware and software.



### Carlson Hydrology

Full 3D site, road and lot design feeds directly into flow calculations and drainage design. Carlson's HydroNET gives you the automation and precision you need. Available with HydroCAD.



### Carlson GIS

This all-purpose, easy-to-use tool for the surveyor or engineer allows for enhanced data capture and linking, data labeling, import/export of SHP files, polygon topology creation and analysis, and more.



### Carlson Takeoff

Provides fast and accurate CAD-based project estimating and, once you get the job, helps save both time and money by minimizing staking and gives you easy-to-use evaluation tools for quantity and quality control.



### Carlson Grade

Ideal for real-time grading applications, allowing heavy equipment operators to grade sites without stakes, even in blinding conditions. A glance at a screen mounted in the cab provides cut/fill and position information and enables achievement of the proper grade with the first pass. Recognizes standard dwg files.



### Carlson Mining

Chosen by 90 percent of the U.S. coal mining industry, Carlson Mining is the acknowledged industry standard. Available in modules -- Geology, Surface, Underground and Basic Mining -- that provide advanced technology. Choose only what you need.



### Carlson Grade Supervisor

Offers affordable and easy-to-use software for day-to-day surface and grade management tasks for site supervisors, inspectors and grade checkers. Grade moves seamlessly from GPS pole to pickup/ATV. Supervisors can get anytime volumes, track real-time cut/fill, plus both collect and stake points.



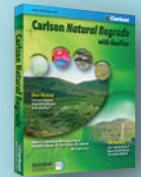
### NEW! Carlson Software Investigations (CSI) Mobile

Designed with powerful forensic diagramming capabilities to measure and map crime scenes and traffic accidents. Ideal for city and county police departments, State Police and consulting firms engaged in accident reconstruction. New release has entire list of cars, plotted to scale, plus new Line Details features.



### Carlson Natural Regrade

Go “green,” save and get greater sustainability with this remarkable program for anyone faced with disturbed lands. Designs the land to be as it would have naturally formed on that site over thousands of years, providing an affordable and natural way to reclaim land.



### Carlson Surveyor/Surveyor+

Fast, incredibly durable, and powerful, a completely ruggedized data collector with an IP67 water and dust resistant Ingress rating, plus more RAM and increased operating speed. Encased in magnesium housing and weighs just two pounds with keyboard sized to work with even the largest or gloved hands. Runs on Windows Mobile 6 and with Carlson SurvCE.

