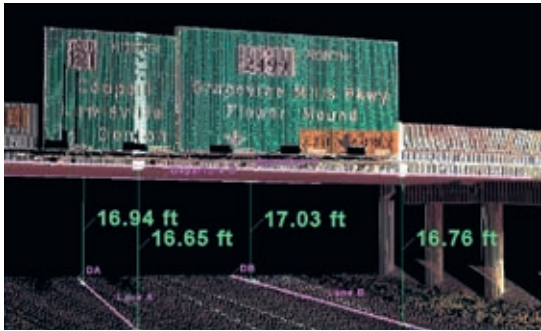
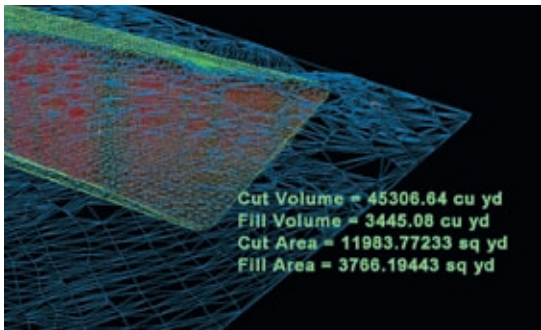


Leica Cyclone SURVEY 7.0



One of the many powerful measurement and annotation tools is an automated tool for analyzing and documenting clearances at overcrossings.



Ground surface TINs and other meshes are easily created and offer great value. Here is an automated report analyzing cut and fill quantities using "before-and-after" scan data of a ground surface.

Efficient Point Cloud Manipulation & Navigation

Leica Cyclone SURVEY has many features that let users work efficiently with rich laser scan data sets. Cyclone's Level of Detail (LOD) graphics display and visualization modes allow users to "see through" walls, apply shaded rendering, or enhance edges for improved comprehension of dense point clouds. Texture mapping tools allow users to accurately "drape" photos of the scanned scene onto point clouds for an even more realistic viewing experience. Cyclone SURVEY's friendly key plan and TruSpace panoramic viewing modes provide intuitive navigation and viewing options.

High-Performance Geometric Processing

Accurately produce a selected geometry type, such as planes and topographic surfaces. Least-squares fitting and quality-of-fit statistics ensure reliable results, while Cyclone's advanced memory management provides high performance.

Rich Tool Set for Civil/Survey and Other Applications

For excavation and grading, Surface Deviation tools provide accurate quantity calculations. Volume and area for cut and fill are precisely calculated. Output options include volumes, contours, and/or tables including elevation differences at a user-specified grid sample. A Clearance tool even finds and reports absolute minimum vertical and horizontal clearances for overpasses, bridges, interchanges, and overhead sign structures. A Virtual Surveyor tool emulates a data collector for creating topographic maps.

Leica Geosystems HDS Software Family

Cyclone SURVEY is part of a full software family for managing laser scan data. Check the web address below for additional information.

Leica Cyclone SURVEY 7.0 Specifications*		Hardware and System Requirements
Large point cloud mgt	3D limit boxes, slices, interactive visualization of massive data sets Cyclone Object Database Technology: fast efficient point cloud mgt.	Processor: 2 GHz Pentium® 4 or higher RAM: 1 GB (2 GB for WindowsVista) Hard Disk: 2 GB
Visualization	Full 3D fly, pan, zoom, rotate. Control color mapping using intensity, true-color, gray scale, color by elevation, one-sided (front or back), silhouette (enhanced edges). Map external photo to point cloud. Key plan and panoramic viewing.	Network card: Ethernet (required for licensing) Display: SVGA or OpenGL accelerated graphics card (with latest drivers)
3D Modeling	Least-squares fitting of 3D geometry. User defined error tolerance. Statistical QA reports	Operating system: Microsoft Vista** (32 or 64), or Microsoft Windows XP (SP2 or higher) (32 or 64)
Animation	Create fly-through animations in 3D point clouds and models	File System: NTFS
COE	Seamless two-way data integration with AutoCAD and MicroStation	
Import	Data from CAD via COE (Cyclone Object Exchange) Control data from ASCII formats & X-Function DBX	
Export	Point data in standard formats: XYZ, PTS, PTX, DXF, X-Function DBX, Land XML, etc. Point data in special formats: PTZ, ZFS, TOPO pci & cwf Image and model data: COE, BMP, JPEG, TIFF	

** Some systems may not support Windows Vista's Desktop Windows Manager (DWM) with Leica Cyclone and must be operated in Windows Classic Look.

Windows is a registered trademark of Microsoft Corporation. Other trademarks and trade names are those of their respective owners.

* Reference the Leica Cyclone 7.0 Technical Specifications document for a complete listing of product specifications.

Illustrations, descriptions and technical data are not binding. All rights reserved. Printed in Switzerland - Copyright Leica Geosystems AG, Heerbrugg, Switzerland, 2009. 768498enUS - VIII.09 - RDV